

# by the sea TIMES

LOCAL NEWS YOU CAN TRUST

FREE take one

[www.bytheseatimes.com](http://www.bytheseatimes.com)

September 11, 2009

Volume 6 issue 10



**Lauderdale-by-the-Sea to Host  
Nation's first Biorock Coral & Fish  
Habitat Project...**  
Page 12

Meet New LBTS  
Police Chief,  
Oscar Llerena  
Page 3

Lauderdale-by-the-Sea...  
Still Affordable! *Property  
Taxes Decrease by 10.8%*  
Page 4

Commissioner  
Report Card Time  
Page 7

Ask Not What You Can  
Do For Your Country -  
Ask What You Can Do  
for LBTS...Page 19



# New Rules Protect Coral from Anchor Damage

By Stephanie and Dan Clark, Cry of the Water

A new state law that went into effect on July 1, 2009 can hold boaters responsible for repairs and mitigation for reef injuries caused by boat anchors. Public-education campaigns about the new law and penalties for damaging corals will be launched this summer



as requirements of marine event permits issued for the Fourth of July. State, county and environmental groups asked the U.S. Coast Guard to include coral protection in this year's event permits. Concerns were raised that barges anchored offshore used to launch the fireworks would damage coral reefs. Two species of coral, Staghorn and Elkhorn, were listed as Threatened under the Endangered Species Act and Broward County was designated as Critical Habitat for their recovery. These public service announcements will be coming late to educate boaters about reef damage on two of the biggest anchoring days of the year, the Fourth of July and mini-lobster season.

Lauderdale-by-the-Sea, Ft. Lauderdale, Pompano Beach along with many coastal communities from Palm Beach to Miami-Dade waited most of June for approval of their fireworks display. But spectator boats lining the coast are the real threat during marine events. Most offshore spectators

wanting to go north of the port didn't have to travel the further distance to LBTS for a good view choosing to anchor off Ft. Lauderdale to enjoy the fireworks. Mooring buoys located off LBTS gave boaters the opportunity to watch the show while protecting the reef from anchor damage.

Following a few simple rules you can help protect our coral reefs. Coral reefs in Broward County can start as close as 300 feet from shore. In LBTS this distance is marked by the buoys designating the swim area on the beach. It is against federal and state law to damage coral. Violations of Federal law can result in fines of up to \$25,000 or six months in jail. Penalties for state Law violations can include the cost of repair to reef resources. You can protect the reefs when boating by never anchoring on the reef. When anchoring near coral resources take special care. Swim your anchor down and firmly anchor it in a sandy area. Be aware that your boat

is firmly secured to the bottom and you are not dragging your anchor. Use mooring buoys when available.

To report an injury to coral or an anchoring violation: Call the NOAA Fisheries Service Office for Law Enforcement at 1-800-853-1964.

When swimming, snorkeling or diving near coral take care, keep your fins, equipment and hands off the coral reef. Contact can damage the delicate coral animals and touching or standing on a coral reef is prohibited by state law.

It is illegal to collect coral, dead or alive. Report illegal activities



on reef ecosystems. Illegal fishing, improper anchoring and dumping of trash should be reported to the proper authorities.

Even if you don't dive or snorkel you can help protect the marine environment. In addition to picking up your own trash, carry away trash that others have left behind. Beach and reef litter poses a significant threat to the health and survival of marine organisms that can swallow or get tangled in plastic bags, six-pack rings and other debris.

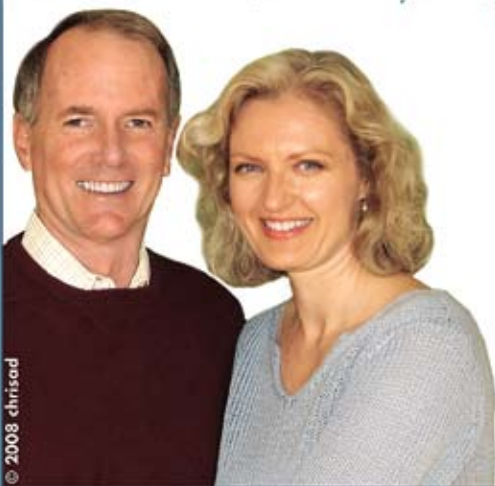
**Correction:** In the July 31, By the Sea Times article, The Truth Detector and Mayor Minnet, we wrote that former LBTS Mayor, Oliver Parker received campaign contributions from BSO Unions which was inaccurate. Our apologies to Mayor Parker for the error.


SETTING THE STANDARD *for*  
TRUSTED DENTAL EXCELLENCE

Excellent Dental Care *for* The Entire Family

Knowledgeable, Caring, Friendly and Courteous Staff

Filtered Water Lines • Disinfectants • Heat-Sterilized Tools  
Intraoral Camera • Convenient Payment Options • TMJ (Jaw Pain) Therapy





3015 BAYVIEW DRIVE  
• FORT LAUDERDALE •  
(954) 566-1548

Visit us on the Web at  
[www.HurwitzDental.com](http://www.HurwitzDental.com)  
[www.FortLauderdaleSmiles.com](http://www.FortLauderdaleSmiles.com)

ALL LOCAL INSURANCE IS WELCOME & ACCEPTED!



# A Work in Progress

As a young man, I was privileged to have spent many hours in scuba gear, snorkeling and diving the reefs of South Florida. I recall the beautiful sea fans and various shapes of coral. They were clean and bright with color and surrounded by small reef fish.



**Ken Wardlaw,  
Former  
LBTS Mayor/  
Commissioner**

Over the years, these things began to disappear and become dirty through pollution. Beautiful coral was destroyed by careless boaters, divers, fisherman, and others. Approximately four years ago, I began to research what others may have done to replace or rejuvenate damaged coral reefs around the world. I discovered Global

Coral Reef Alliance and Dr. Tom Goreau, Ph.D. This non-profit organization had been using a unique process that had proven a success in other parts of the world.

I contacted Dr. Goreau and, over a period of time, he agreed to come to Lauderdale-by-the-Sea and make a presentation before the Town Commission. Fortunately, all the Commissioners agreed to proceed with a fish habitat/coral reef pilot program. Time and space do not permit me to explain all that has transpired during that time and since but suffice to say we are on track for the first and only program of its type in the United States.

Much thanks goes to Marc Furth and others who have devoted many hours in preparation for this historic project. I am pleased that I could play a part not only in saving our reefs - but projecting this project in the years to follow - there is no way to determine the extent that

this type of project may have on the protection of beaches around the world. Coral reefs are the principal barrier that protects the beaches from continual erosion. The so-called beach re-nourishment programs that are in use today are temporary, at best, as the sand that is pumped on the beaches will soon wash back to sea as a result of tides and wind.

We are in a position to become internationally known as a small coastal community that took a proactive stance against other non productive programs. The recent effort to recover the millions of automobile tires that was a failed effort to reconstruct coral reefs is a good example. There have been others that have proven less of a failure but none have truly been successful to any great extent. I personally am confident that Dr. Goreau and Global Coral Reef Alliance, through the Biorock Process, has a great possibility of success.

great just got **BETTER!**

Better Homes. Better Life. **BETTER VALUE!**



Ready-To-Occupy  
Oceanside residences  
from the **\$400s**

Live in  
low-rise luxury  
on the ocean.



BY MINTO





954-776-3937

4510 EL MAR DRIVE  
LAUDERDALE-BY-THE-SEA, FL 33308  
2 BLOCKS NORTH OF COMMERCIAL BLVD.  
ON EL MAR DRIVE, EAST OF A1A

OPEN DAILY 10-6 | BROKERS WELCOME  
ON-SITE MORTGAGE COUNSELING





www.mintofla.com

beinspired



Prices include maximum incentive, please see new home professional for details. \*Artist renderings, features, dimensions, prices and availability subject to change without notice. Not an offer where prohibited by state statutes. CGC 059780: 309.

ORAL REPRESENTATIONS CANNOT BE RELIED UPON AS CORRECTLY STATING THE REPRESENTATIONS OF THE DEVELOPER. FOR CORRECT REPRESENTATIONS, MAKE REFERENCE TO THE DOCUMENTS REQUIRED BY SECTION 718.503, FLORIDA STATUTES, TO BE FURNISHED BY A DEVELOPER TO A BUYER OR LESSEE.

\*Minto Communities received the highest numerical score in Palm Beach in the proprietary J.D. Power and Associates 2008 New-Home Customer Satisfaction, New Home Quality and New Home Design Studies<sup>SM</sup>. Studies based on 50,837 total responses in 33 markets, measuring builders in Palm Beach (Indian River, Martin, Palm Beach and St. Lucie counties) and opinions of consumers who purchased a new home in 2007. Proprietary study results are based on experiences and perceptions of consumers surveyed in March-July 2008. Your experiences may vary. Visit [jdpower.com](http://jdpower.com)



# Lauderdale By The Sea Pilot Fisheries Habitat Restoration Project To Be Launched Soon

Thomas J. Goreau, PhD, President,  
Global Coral Reef Alliance

Dan Clark and Stephanie Clark, Cry of  
the Water

The first coral reef fisheries habitat restoration project in America using a novel technology called Biorock to speed up coral growth and survival and create shelter for fish populations will soon be started in Lauderdale-by-the-Sea. This will create a new attraction for divers and snorkelers in the city renowned as "The Shore Dive Capital of Florida".

This pilot project, which will make the city the leader in coral reef restoration in Florida, has taken several years to get all the permits and approvals needed from a host of county, state, and federal agencies. It will be located south of the current Lauderdale-by-the-Sea snorkel trail.

What will be visible from the shore will be two buoys, covered with solar panels, which will use sunlight to provide a completely safe low voltage trickle charge to six tunnel-like open mesh steel structures on the sea floor below.

The trickle charge will completely prevent any rusting of the steel, and cause the slow growth of solid limestone rock over the structures. Limestone is the natural mineral that makes up coral skeletons, reefs, tropical white sand beaches, and most of Florida. Limestone is naturally dissolved in the ocean, but does not spontaneously grow out of the

water. The electrical trickle charge causes it to grow over charged metal surfaces similar to the way that corals use energy to make their skeletons from naturally dissolved chemicals in the sea.



**Thomas J. Goreau, PhD**

This ingenious process mimics the natural growth of coral reefs and was invented by a pioneering architect, the late Professor Wolf Hilbertz, in the 1970s as a way of growing natural building materials in the sea.

Limestone has been used for construction since the pyramids of ancient Egypt. In the 1980s Hilbertz began working with Dr. Thomas Goreau, a coral reef specialist, to use the process to restore coral reefs. They and their students have built hundreds of Biorock coral reef and oyster reef restoration projects in more than 20 countries.

They found that corals on these structures grow typically two to six times faster than normal, and have sixteen to fifty times higher survival following severe high temperature episodes, events that have become more frequent in the last 20 years as the global warming impacts of rising atmospheric CO2 begin to be felt. Furthermore, they find that large schools of fish, especially juveniles, are attracted to them. As a result, Biorock reefs have kept corals alive in places where they would have died, and allowed new reefs to be grown back in a few years in damaged areas where no natural recovery had taken place.

That is why this approach is so badly needed in Southeast Florida. Only a handful of the oldest divers now remember the wonderful coral reef that used to stretch along Broward, Dade, and Palm Beach counties, where they would swim among forests of corals, grabbing lobsters and conch and spearing big fish. Those habitats have almost entirely vanished. Only one small remnant now survives, from southern Lauderdale By The Sea to Port Everglades, and this portion has significantly deteriorated since we first described it in 2001.

Once the reef disappeared, so did the fish, and the natural growing barrier that protected the beach from

erosion. This simply sped up the disappearance of the beach sand. As a result they have had to dump sand on the beaches again and again, only to watch it wash away as soon as it had been dumped. The only area where this did not happen was in front of Lauderdale-by-the-Sea and Fort Lauderdale, where the beach has been stable because living reef still remained to protect it.

The reason why this amazing reef has almost entirely vanished is well known to the oldest divers: for more than 40 years vast sums of taxpayer's money has been spent on systematic programs to dredge sand offshore and dump it on the beaches in the name of "renourishment". These divers watched in horror as the sand, and the mud mixed in with it, was re-suspend-

**FISHERIES** continued on page 18

**NOW OPEN**

# Basilic

## Vietnamese Grill

**Entrees from \$10.00 to \$16.00**

**Delicious & Nutritious**

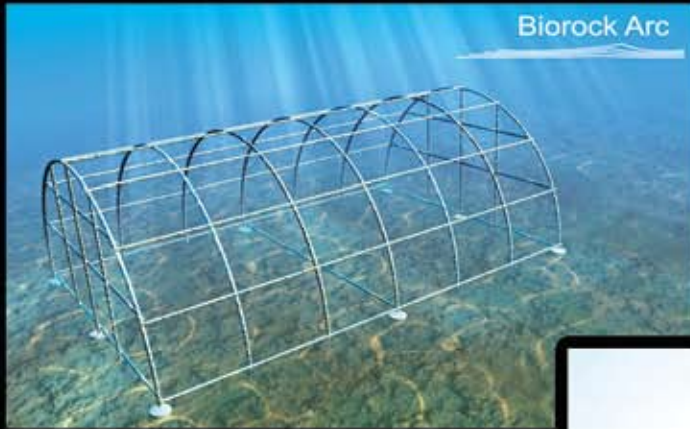
**Chicken - Beef - Pork  
Seafood-Shrimp-Squid  
Scallop & Fish dishes  
with lots of veggies!**

**218 E. Commercial Blvd.  
Lauderdale-By-The-Sea  
954-771-5798**

**Healthy Food** Lunch & Dinner



# Lauderdale-by-the-Sea... to Host the Nation's First Biorock<sup>®</sup> Coral and Fish Habitat Restoration Project



**Biorock Coral Restoration** projects require formal construction plans for implementation therefore, the first step is to assess the physical and biological characteristics of the project site.

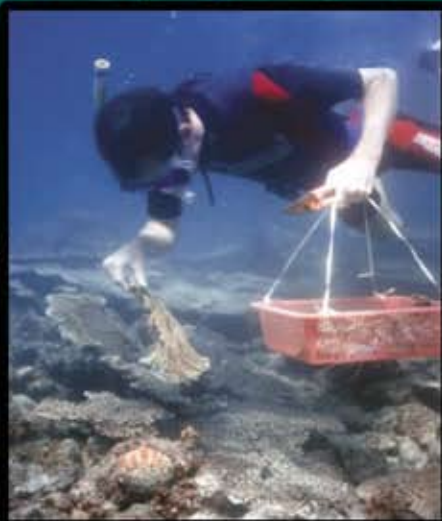


**To build a biorock reef, an electrically conductive frame often made from construction grade rebar is welded together, submerged and anchored to the sea bottom.**

**Low voltage, direct current, supplied by solar buoys initiates an electrolytic reaction causing minerals, naturally found in seawater, mainly calcium carbonate and magnesium hydroxide to grow on the structure. The steel is protected and over time the structure gains strength.**







**Broken fragments of corals lying on the seabed are collected and fixed to the structure where they profit from the beneficial environmental conditions.**

**Due to the environmental changes at the steel frame, triggered by the electricity, corals on the Biorock structures typically grow 2-6 times faster than under normal conditions.**



**Biorock structures serve as fish-attracting devices and host a wide range of marine life. These rehabilitation platforms for corals can be designed in almost any shape and are therefore ideally suited for the development of quality tourist attractions. Unique diving and snorkeling trails can be devised by seascaping the marine environment with this Biorock technology.**



**Pilot installations built with Biorock Technology have demonstrated rapid growth even in stressed environments including Jamaica, Mexico, Panama, Indonesia, Maldives, Thailand, Seychelles, Palau, Philippines, Marshall Islands, French Polynesia, St. Martin, Turks and Caicos, Tobago, and the Bahamas...and now soon to be in Lauderdale-by-the-Sea, Florida!**

Photos courtesy of Ari Spenhof / Info: courtesy of Global Coral Reef Alliance, [www.globalcoral.org](http://www.globalcoral.org)





# Dignitaries Praise Innovative Reef Restoration Project

By Cristie Furth

**Congressman Ron Klein** – “I am thrilled that this cutting-edge technology to cultivate coral reefs is coming to South Florida,” Klein said. “This milestone decision paves the way for construction of our nation’s first Biorock Coral and Fish Habitat Restoration Project in Lauderdale-by-the-Sea. Vice Mayor, Jerry McIntee should be commended for his role in initiating and seeing through the approval of this conservation project. He first brought this project to my attention when I began serving Congress in 2007, and I reached out to the Florida Department of Environmental Protection to express my support for it.”

“In South Florida, we have the third largest coral reef ecosystem in the world, and we take seriously our responsibility to preserve this national treasure. It is critical we protect these coral reefs, which are a first-line of defense against hurricanes and storm surges for our coastal communities like Lauderdale-by-the-Sea. I look forward to seeing Lauderdale-by-the-Sea embark on this landmark project.”

**Senate President, Jeff Atwater** – “What a great accomplishment for Lauderdale-by-the-sea and exciting reef preservation achievement for our coastline”, said Senate President, Jeff Atwater. “Having seen the deterioration of our reefs firsthand, I am so proud of and grateful for the vision, determination, and commitment shown by so many in the community who refused to let anyone or anything stand in their way of restoring vital reef habitat. From securing local funding and providing leagues of technical research to weathering many storms through over four years of permitting, our community held firm. We have achieved success and will soon be constructing the first Biorock Coral Restoration project in the United States. Cutting edge technology being used, right here in our



**Atwater**

back yard to ensure our coastal reef and fish habitat are preserved for generations to come – that’s something to cheer about.”

**State Representative, Ellyn Bodanoff** – “The natural beauty of our coastline has always been one of Florida’s major attractions for both tourists and residents. Ironically, the very features that have drawn people to Florida are potentially endangered by the increased population pressures. I applaud the residents of Lauderdale-by-the-Sea for taking the initiative to restore and replenish the health of the reef that protects our coast by reducing wave energy from storms and hurricanes.”



**Bodanoff**

**LBTs Assistant Town Manager, John Olinzock** – “The construction of the artificial reef has been in the works since 2005 by the Town Commission and will assist in restoring coral reef fish habitats and provide recreational benefits to snorkelers and divers, an important component of tourism in the Town.”



**Olinzock**

**Vice Mayor McIntee** – “What a great day for LBTs. Finally, all the permits are done, the funds are issued, and we are on the way to constructing the first artificial reef of this kind in our nation. Thank you Ken Wardlaw, Marc Furth, Esther Colon and all the individuals who have worked tirelessly to get this project off the desk and into the field for completion. Full speed ahead – we in Lauderdale-by-the-Sea can be proud of what the future holds in the development of this reef project.”

**Commissioner Silverstone** – “The proposed reef project is on course. The last line in the Town’s mission statement is as follows: “Maintaining the natural environment of the Town is essential. We strive to preserve and protect the Town’s charm, beaches, and finite resources.” Thanks to former Town-Mayor, Ken Wardlaw and former Town Commissioner, Marc

Furth for all they have done in fulfilling the spirit in which this town is founded on. Bravo!”

**Commissioner Clotey** – “We should all be proud that we as a community are able to contribute to the preservation of our planet and the ocean reefs which are an integral part of its ecosystem. May this project serve as an inspiration for our neighbors to do the same.”

*[Ed. Note: Neither Mayor Minnetnor Commissioner Dodd were contacted for comments. Their views on the reef project became a matter of public record when they voted to cancel the project at the July 14th Commission meeting].*

**Former Commissioner, Marc Furth, Project Liaison** – It has been four years since I made the



**Furth**

first presentation for this reef restoration project before the LBTs Commission. I introduced both Dr. Thomas Goreau from Coral Reef Alliance and Dan and Stephanie Clark from Cry of the Water. At that time, Dr. Goreau presented an impressive slide show that captivated the audience. It was so impressive that the Commission unanimously decided this would be a viable project for our threatened reefs. One year later, Global Coral Reef Alliance was awarded a contract to proceed with the project, the first of its kind in America. It has taken three years to obtain permits from the State of Florida Department of Environmental Protection, Army Corps. of Engineers, Coast Guard, and a Broward County License. A very long process with many thanks to Dan and Stephanie for all their efforts in seeing it through.

It has been my pleasure to have contributed to the project through my years as the liaison between Dr. Goreau and the Town of Lauderdale-by-the-Sea. I pledge my continuing support for this unique and important environmental restoration project and thank the present Town Commissioners who supported the continued funding. A very special word of appreciation goes to former Mayor, Ken Wardlaw, who initially contacted Dr. Goreau out of concern for our deteriorating reefs and set this process in motion.

# LETTERS TO THE EDITOR

## Death by a Thousand Piffling Rules

At the last Commission meeting, a man related how he and his five year-old son were surf-fishing in the ocean in front of his building when they were ordered by police to pack up. They were here on vacation and I enjoyed watching them every evening on an otherwise deserted beach. I have also daily watched kite surfers dipping and diving in the water. Most

of the young men are the children or grandchildren of condo-owners who are here for a short holiday. Now the Lords of this so-called tourist friendly town want to see the last of them. It is high time that the ----- stopped acting like spoiled children. Spoiled children are not very popular.

**Larry McGuinness**  
**Lauderdale-by-the-Sea**

## Hillsboro Inlet District Battle Continues

By Bob Roberts

The latest in my attempts to find out what the Hillsboro Inlet District Commission is up to. I started back in May with a letter to the LBTS Commission asking them to instruct Commissioner Dodd, the LBTS representative on the Hillsboro Inlet Commission, to provide copies of the District's budgets and actual expenditures for the past 10 years (Public Information). Instead of complying Mr. Dodd forwarded the request to the district Chairman, Jack Holland. He prepared a 5 page dissertation on Inlet District operations and sent it to the District's attorneys to reply to me. No financial figures! I complained to the District's General Consul, Mr. Goren and he got them to send me audited financial reports for their fiscal years from 2000 to 2007, ignoring FY 2008 and the current year Budget. I again complained in a letter to

Mr. Goren and received a letter back saying: "Please be advised that the District's Annual Audits for Fiscal Year 2000 through 2007 which were provided to you on August 3, 2009 are the records that responded to your request." Again ignoring my request for 2008 and 2009 data. My response follows.

**September 04, 2009**

**Dear Mr. Goren:**

I was most disappointed at the lack of any response from your associate Mr. Tolces to my request of August 10th, 2009 for the Hillsboro Inlet District financial report for the year ended September 30th, 2008 and the Budget for the current year. Mr. Tolces letter of August 21, 2009 stated: "Please be advised that the District's Annual Audits for Fiscal Year 2000 through 2007 which

were provided to you on August 3, 2009 are the records that responded to your request." This is not correct! My original request to Mr. Dodd was for the past ten years of financial results. My prior letter to you specifically requested results for the fiscal year ended September 30, 2008, and for the current year budget. Since my repeated requests for this information have been totally ignored, it would appear that the District Committee has some reason for not wishing to release this public information. My concern is increasing over possible financial mismanagement at the Inlet District.

I would appreciate your cooperation in getting the requested information released.

**Sincerely,**  
**R. W. (Bob) Roberts**  
**Copies to Hillsboro Inlet District and LBTS Commissioners**

**FUTURE???** continued from page 10

reaped the benefits of the Town Manager's sound advice and actions before the present economic crisis, and all that this entailed, I am confident we would be looking at a much higher tax bill.

Just be aware that there are those who will try to mislead you through half-truth and outright lies. You must be aware of this, step up, and help preserve our little unique town. Do

not wait for others to do this as you have a responsibility if you prefer our small town to a greater population, more high-rise buildings, more traffic, more parking problems, and higher taxes. Just give this your personal consideration and make up your own mind. Do not accept the word of those who have done little or nothing in the best interest of our town. The future is in our hands! Do not let it slip between our fingers.

**FISHERIES** continued from page 11

ed by storm waves and dumped on top of the coral reefs just offshore, killing them. The first scientific studies of the coral reefs were only done years after the beach dredge-fill projects killed the corals, none were done beforehand, so researchers only saw these areas after the reefs were dead, and they reported that there were no coral reef resources worth protecting!

The Lauderdale-by-the-Sea pilot project, small though it is, is the first step ever taken to try to bring back our magnificent coral reefs. It is our hope that this pilot project is only the first stage in bringing back our lost reefs. We look forward to sharing developments on this exciting project as they happen. Once the project is installed we invite all divers and snorkelers to visit it and see the results for themselves!